

19<sup>th</sup> December 2018

Sigma Energy  
Dunajska cesta 156  
1000 Ljubljana  
SI – Slovenia

Dear David Volk

**EMEC letter of verification**

EMEC are pleased to provide Sigma Energy with this letter of verification, following EMEC's review of your methodology for power performance assessment and having witnessed the systems you have in place for measuring wave and electrical power for your scale device in the Adriatic Sea.

EMEC have calculated, from the data samples that Sigma Energy have provided and identified as the optimum control configuration, the average, maximum, minimum and standard deviation in Capture Width Ratio (CWR) for a range of sea states. These have been tabulated overleaf alongside the number of samples represented by these values for each sea state. Each sample represents 20 minutes and the data provided represents a total of 29 hours 40 minutes at optimum in total.

For some of these sea states more samples will need to be measured and analysed in order to make certain of the statistical significance of this result. The full results and recommendations are detailed in our report\*.

EMEC believe that a full-scale demonstration test will be a key component for Sigma Energy to demonstrate the commercial viability of your technology.

In our report\* we have detailed our findings and outlined some guidance on the IEC power performance technical specifications that are being developed for full scale WEC testing. EMEC sit on the technical committees that are developing and maintaining these standards.

EMEC are at forefront of full-scale WEC power performance testing and would be happy to apply these methods on behalf of Sigma Energy following the deployment of a full-scale device at one of EMEC's facilities or to provide independent recommendations for your test procedures should you choose to test at another facility.

Yours sincerely



Elaine Buck  
EMEC Technical Manager

\* EMEC Report Title "Sigma Energy Verification Report"

European Marine Energy Centre (EMEC) Ltd., Old Academy Business Centre, Back Road, Stromness, ORKNEY, KW16 3AW

Tel: 01856 852060  
Email: [info@emec.org.uk](mailto:info@emec.org.uk)  
Web: [www.emec.org.uk](http://www.emec.org.uk)

Registered in Scotland no.SC249331

VAT Registration Number: GB 828 8550 90



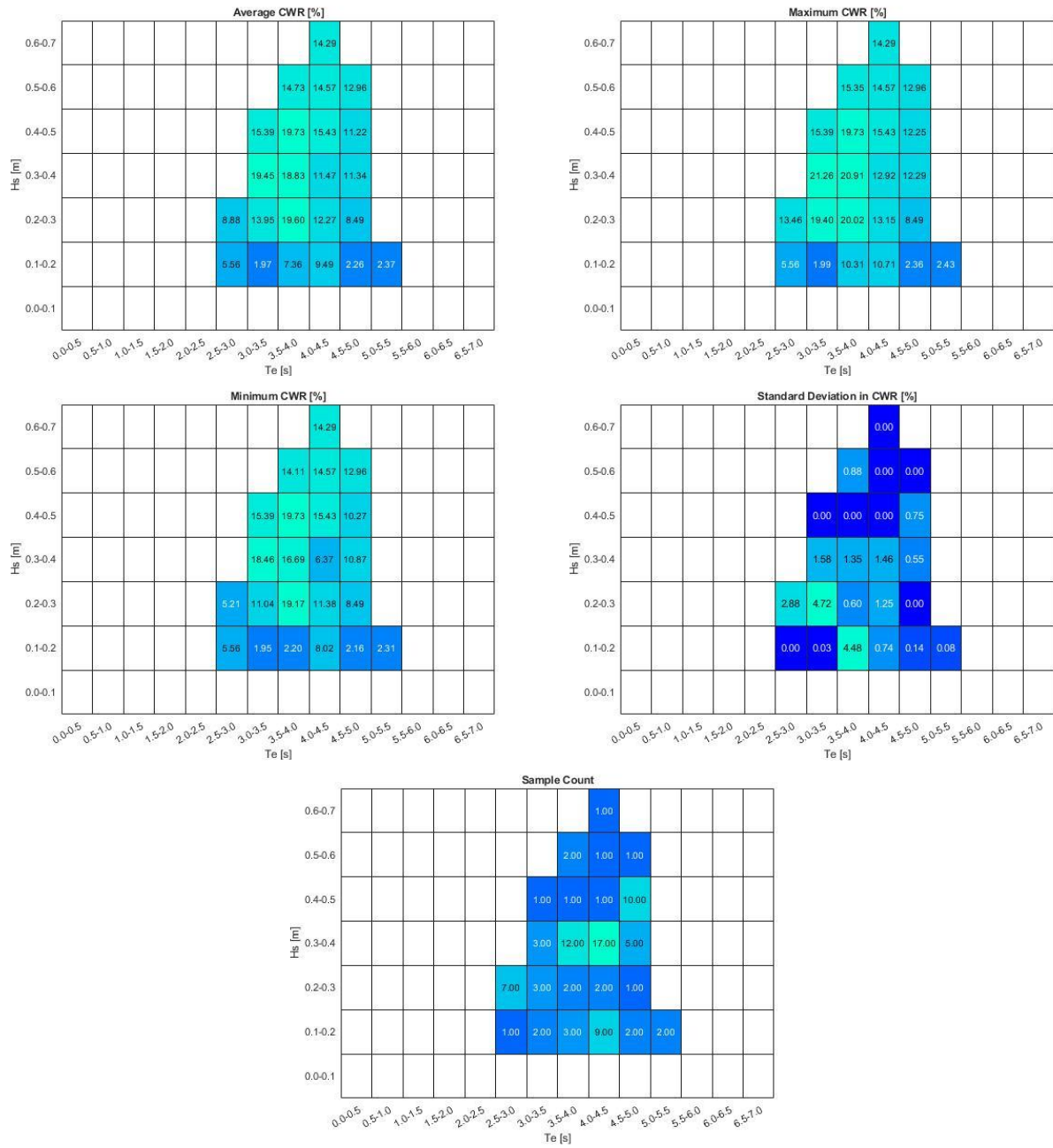


Figure 1: Power matrices showing October-November campaign, tables show (in left to right order) average, maximum, minimum, standard deviation and number of samples measured at different sea states for optimal control configuration identified by Sigma Energy.